

TECHNICAL INSTRUCTIONS	347 (e)
Revision	May 2003

SELECTIVE VALVE

INSTALLATION

OPERATION

MAINTENANCE

**BLACKMER
ZI PLAINE DES ISLES
F- 89000 AUXERRE**

Technical Assistance / RepairTél. : +33 3.86.49.86.03
.....Fax : +33 3.86.49.86.48
Spare parts / AdviceTél. : +33 3.86.49.86.40
.....+33 3.86.49.87.09
.....Fax : +33 3.86.49.87.17
e-mail : contact@blackmer-mouvex.com

**BLACKMER GmbH
Auf dem Zehnthöbel 22**

D-64572 BUTTELBORN - WORFELDEN

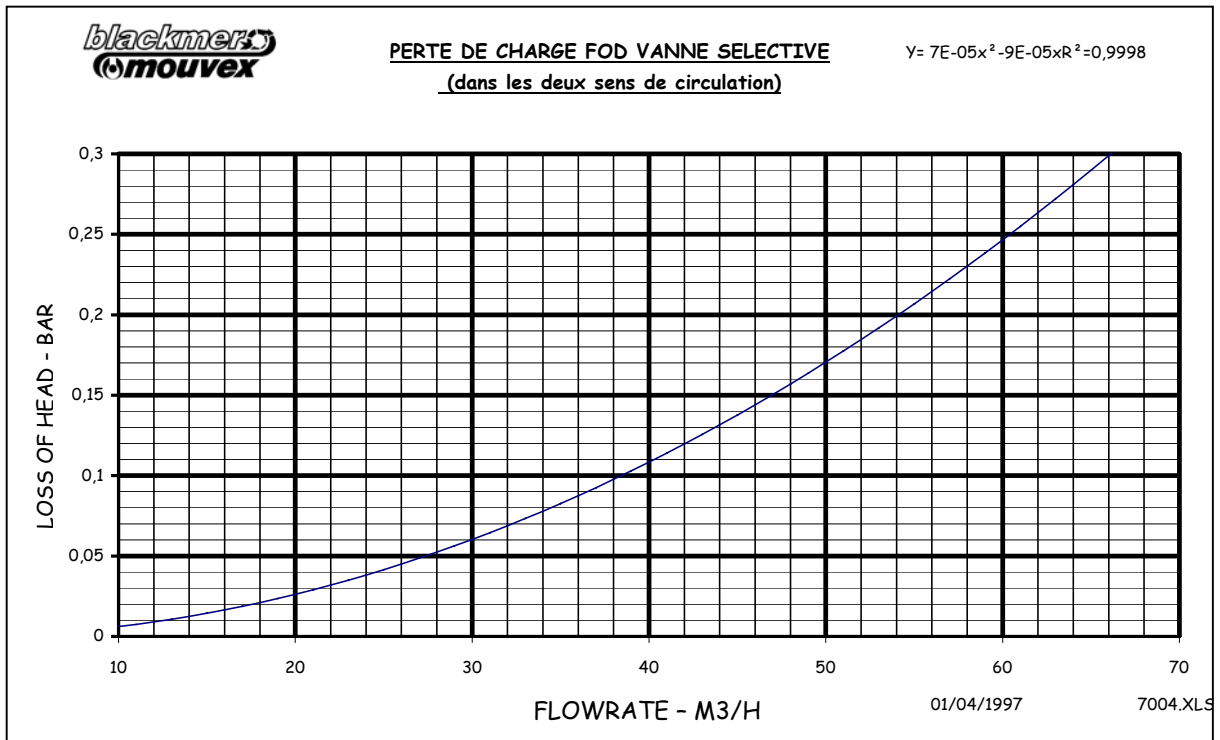
Tel :+49/6152/9869-0
Fax :+49/6152/9869-10
e-mail : willkommen@blackmer-mouvex.com

Your distributor :

Technical characteristics

MAXIMUM OPERATING HYDRAULIC PRESSURE	10 BAR
MINIMUM CONTROL PNEUMATIC PRESSURE	5 BAR

Head loss of valve VA 4 – FOD



INSTALLATION

The selective valve is flange-connected to pumps CC8 40 - CC8 50 - CC8 65.

Connect each venting orifice of the pneumatic controls (ref. A2&B2) and the gutter (B3) to a puppet valve.

Take care to orient the reduced-passage valve/valves so that their feed orifice (ref.B1) is turned towards the outlet side of the product of the selective valve.

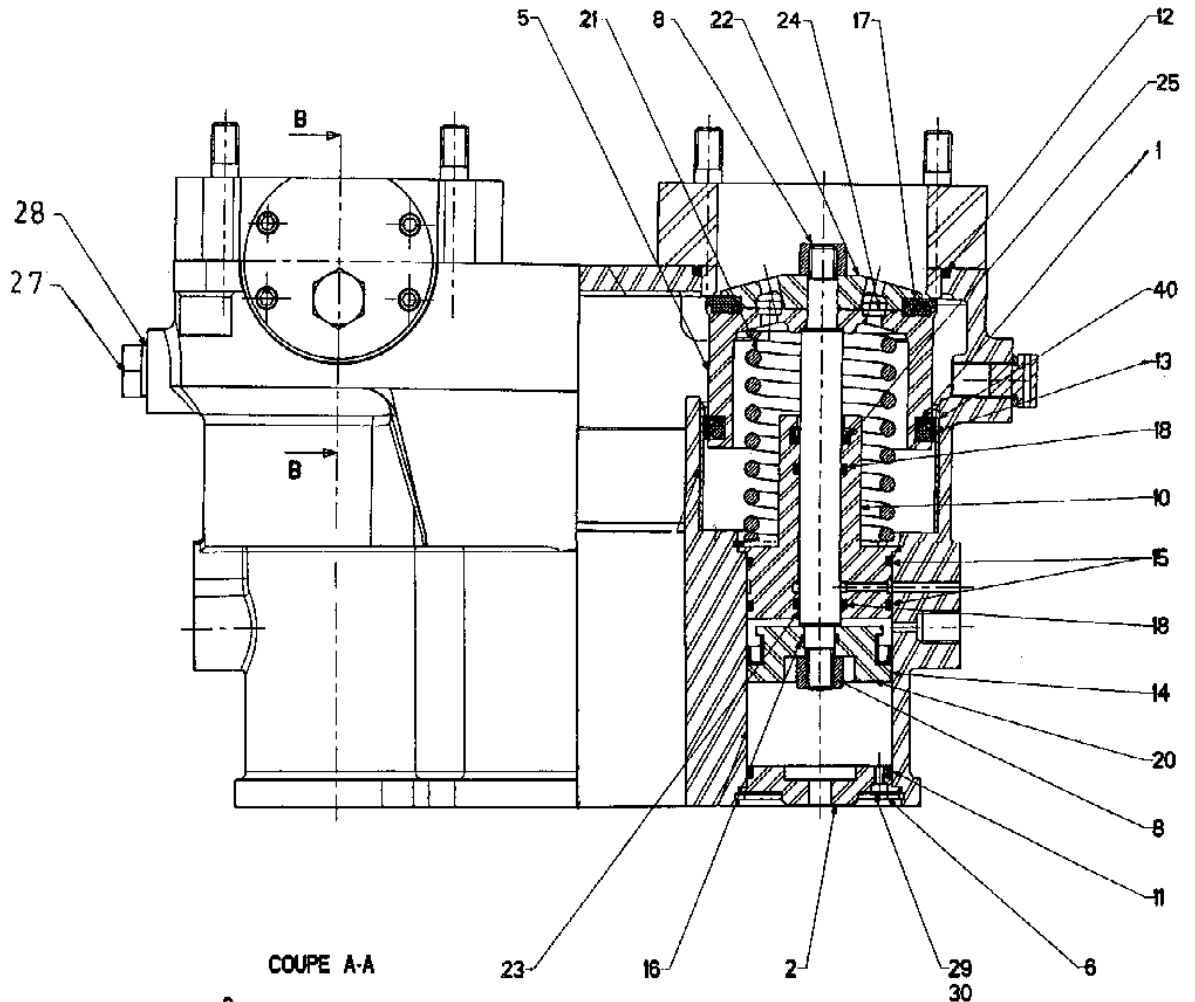
The control air must be filtered and lubricated (use of a lubricating filter in the compressed air network)

SELECTIVE VALVE

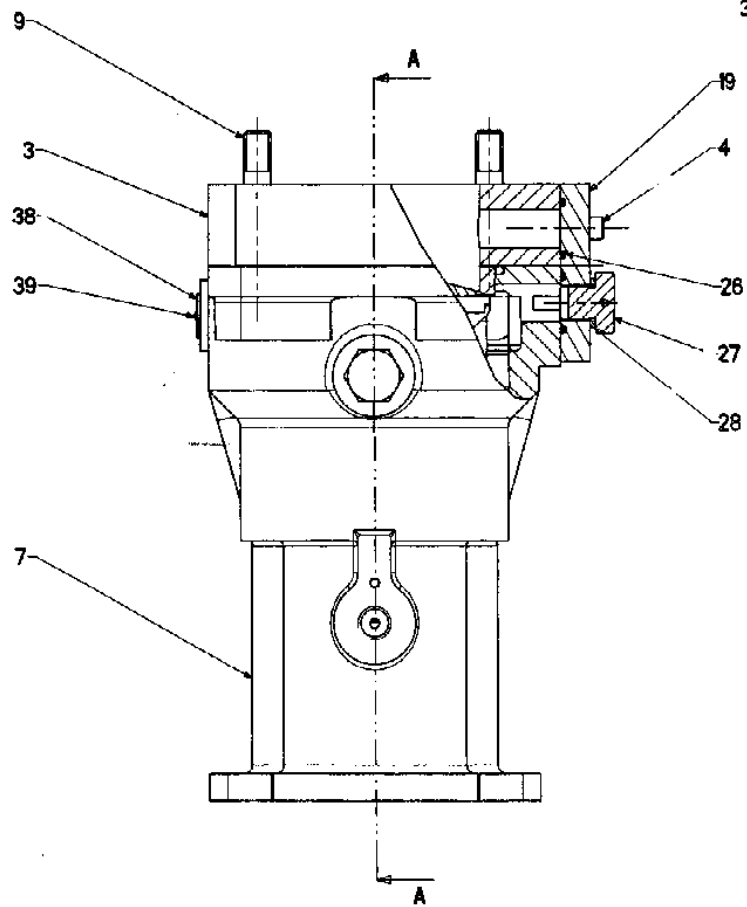
Légend : * = parts or assemblies which can be supplied

REP .	Qty	DESIGNATION	REP .	Qty	DESIGNATION
1	2	Scraper ring	17	2	Flap head seal
2	2	Plug	18	4	Rod seal
3	2	Flange	19	2	Blank washer
4	4	Blank washer screw	20	2	Piston
4a	4	Blank washer embedded screw	21	2	Spring
5	2	Flap	22	2	Flap head
6	4	Snap ring	23	2	Rod
7	1	Valve body	24	2	Grid
8	4	Nut	25	2	Rod scraper seal
9a	8	Embedded stud	26	4	Blank washer seal
9b	6	Stud	27	4	Plug
9c	8	Nut	28	4	Plug seal
10	2	Guide	29	2	Embedded cup
11	2	Plug seal	30	2	Lead
12	2	Flange seal	38	1	Plate
13	2	Flap seal	39	2	Rivet
14	2	Piston seal	*36	1	SET OF GUIDE SEALS (15+8+25)
15	4	Guide seal	*37	1	SET OF PISTON SEALS (11+14+16)
16	2	Rod tail seal			

SELECTIVE VALVE



COUPE A-A



DISMANTLING - REASSEMBLY

Tools required

Hexagon spanners 4	4 Ø M10 nuts
Screwdriver	1 press or 2 plastic rods length 1,2 m
Circlip pliers, Ø 60	2 Ø M10 nuts
Box spanner 16	2 broad washers
Flat spanner 16	

Dismantling

Remove the seals 19 or the preset valve.

Remove the lead seal 30, the screw 31 and the lead-sealing cup 29.

Remove the circlips 6 and take out the plug 2.

Hold the nut 8 and unscrew the other.

Fit two interlocking nuts on 2 diametrically opposite pins and pins and remove them.

Fit the same device to the other 2 pins, **but do not remove them.**

(THIS REQUIREMENT MUST BE COMPLIED WITH OTHERWISE THERE IS A RISK THAT VALVE 23 WILL STICK OUT)

Position the valve without a press, hold the flap in place and remove the 2 remaining pins and free the flap which should come out only under the action of the spring.

In the absence of a press, position the two threaded rods + washers + nuts ((see § Tools Required) in the 2 free inside threads.

Remove the two remaining pins 9 and release the flange 3 by progressively unscrewing the 2 threaded rod nuts.

Reassembly

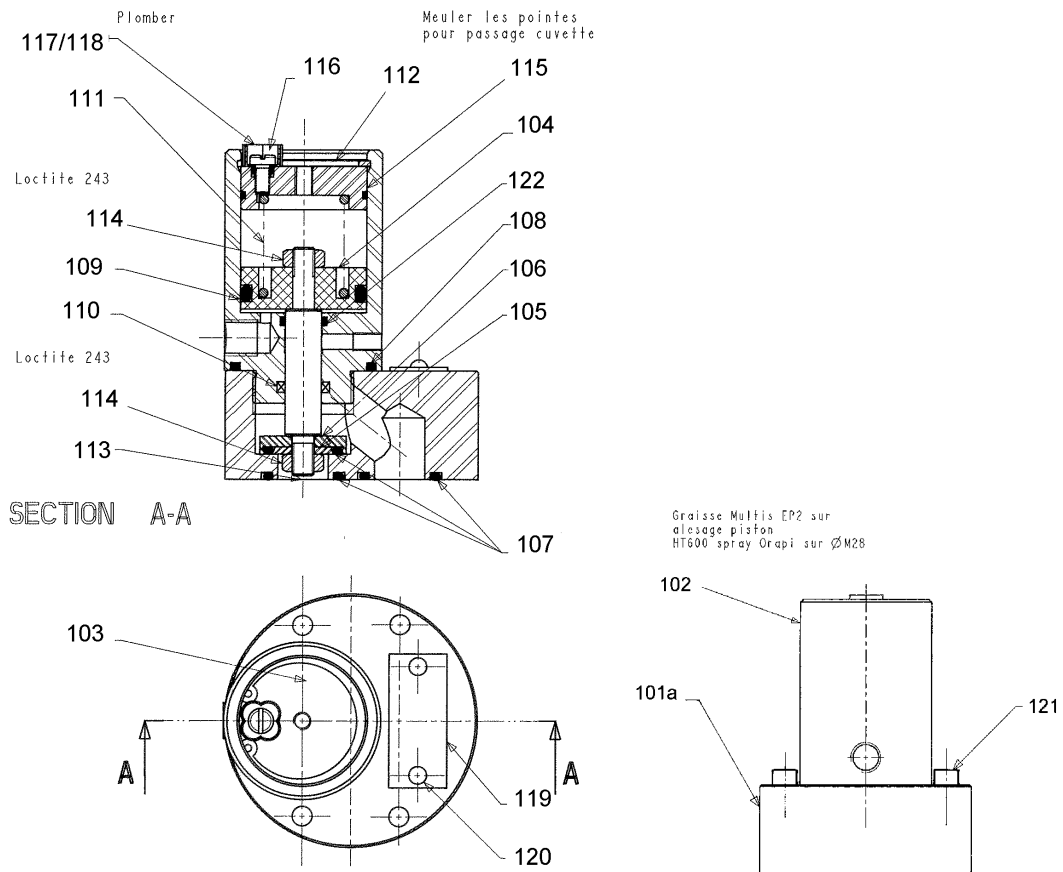
Proceed in the reverse sequence, taking care to lightly lubricate the bore of the pneumatic piston.

MAINTENANCE

No special periodic maintenance required.

SELECTIVE VALVE

REDUCED-PASSAGE (PRESET VALVE)



Légend : * = parts or assemblies which can be supplied

REP .	Qty	DESIGNATION
101a	1	Seat
102	1	Body
103	1	Plug
104	1	Piston
105	1	Flap washer
106	1	Flap
107	3	Seal
108	1	Body seal
109	1	Piston seal
110	1	Rod seal
111	1	spring

REP .	Qty	DESIGNATION
112	1	Circlips
113	1	Rod
114	2	Nut
115	1	Plug seal
116	1	Lead-sealing screw
117	1	Cup
118	1	Lead seal
119	1	Plate
120	2	Rivet
121	4	Screw
122	1	Seal
*125	1	SET OF SEALS (107+108+109+110+115+122)

NOTE: - To order spare parts, please indicate:

- . TYPE and SERIAL NO. of the pump (stamped on pump plate)
- . The document reference: Technical Instructions No. 347b II
- . REFERENCES and DESIGNATIONS of the desired parts. Only those parts (complete assemblies or separate parts) whose reference is preceded by (*) can be supplied.